



BlueCross BlueShield  
of Texas

## Will you be ready?

Visit the ICD-10 page in the Standards and Requirements section of our Provider website at [bcbstx.com/provider](http://bcbstx.com/provider) for information on critical steps, such as testing with BCBSTX. You'll also find answers to frequently asked questions and other tools and related resources.

## Learn more!

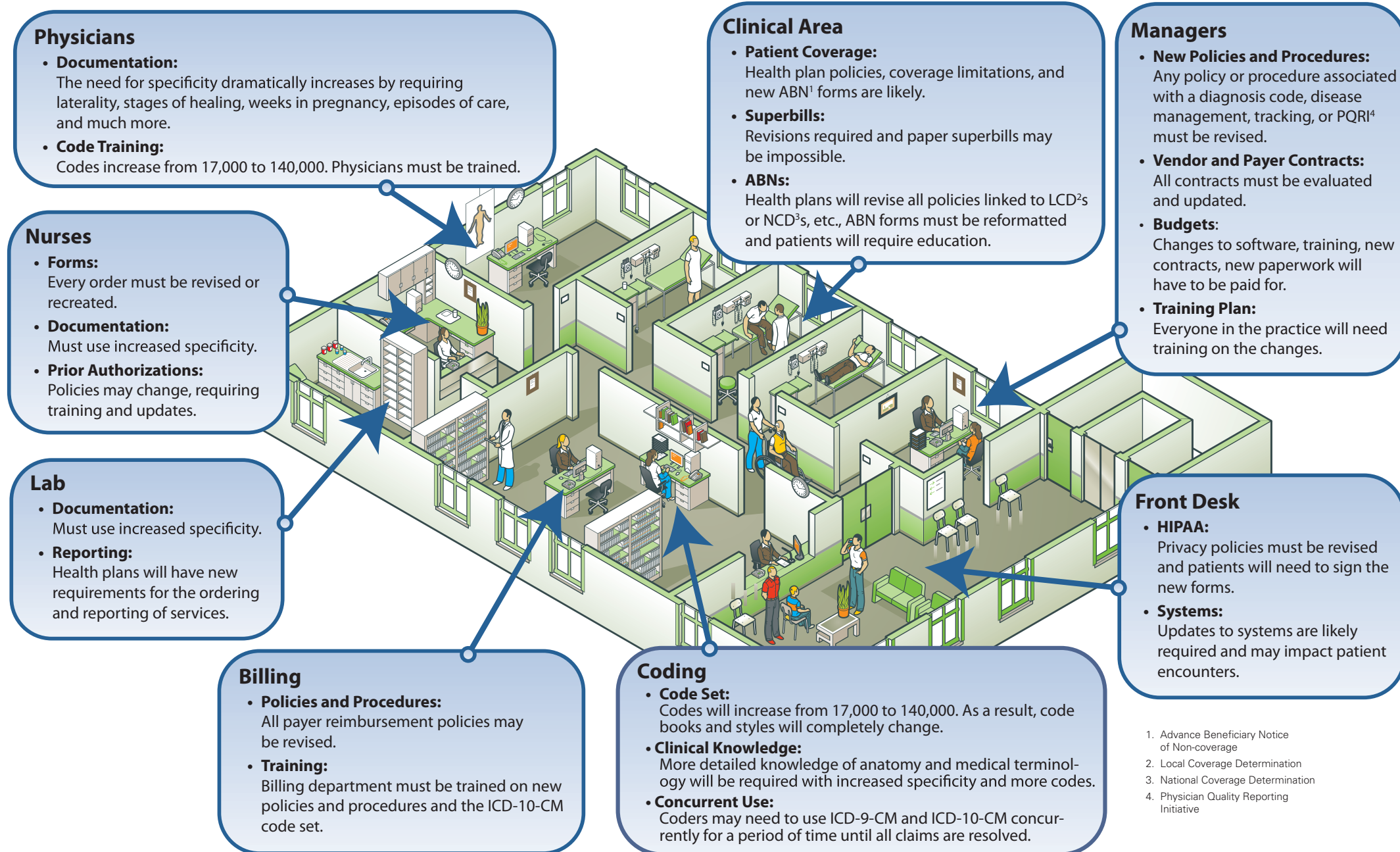
For additional help with your office transition to ICD-10, go to [AAPC.com/ICD-10/](http://AAPC.com/ICD-10/)



Blue Cross and Blue Shield of Texas, a Division of Health Care Service Corporation, a Mutual Legal Reserve Company, an Independent Licensee of the Blue Cross and Blue Shield Association

Blue Cross®, Blue Shield® and the Cross and Shield Symbols are registered service marks of the Blue Cross and Blue Shield Association, an association of independent Blue Cross and Blue Shield Plans.

# ICD-10 will affect all aspects of your practice.



1. Advance Beneficiary Notice of Non-coverage
2. Local Coverage Determination
3. National Coverage Determination
4. Physician Quality Reporting Initiative